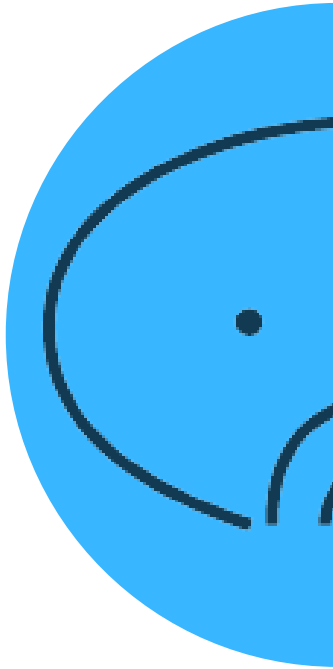


# MARINE program

TECHNICAL PRODUCTS FOR AQUARIUM

## SICCE BRAND



# MARINE

XSTREAM SDC



SYNCRA SDC



## SMART WATER System SDC

XStream SDC 12V



PSK SDC 24V  
2600 - 4000

Syncra SDC 24V  
6.0 - 7.0 - 9.0

## SYNCRA SDC

SYNCRA SDC are the latest generation of SYNCRA pumps and are equipped with integrated intelligence systems to meet the needs of advanced recirculating applications. With programming freedom, controllability is finally coupled with power, energy efficiency, inline or submersible use, and low heat production. Not to mention, they are fully controllable via an internet connection from anywhere in the world via our **CONTROLL** app.

**5**  
YEAR  
GUARANTEE  
3+2 WITH ONLINE  
REGISTRATION



## SYNCRA SDC

## CONTRALL

The new release of CONTRALL App includes key voice commands which make the use of SDC range a real interactive experience where technology, innovation, high performances and low energy consumption create the best ever synergy in your aquarium and water recirculation systems.



# GET COMMANDS

**WATER TEMPERATURE SENSOR**

BUILT IN TEMPERATURE SENSOR TO CHECK THE WATER TEMPERATURE OF THE AQUARIUM IN REAL TIME.



# VOICE CONTROL

*Ehi Google,  
switch ON my  
SDC pump!*

Works with:



Siri



Google  
Assistant

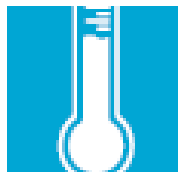


alexa



# SYNCRA SDC

Notifications in real-time with a **complete alert system** designed to instantly provide updates for situations which could compromise your system and aquarium. Tips about how to solve the problems are included.



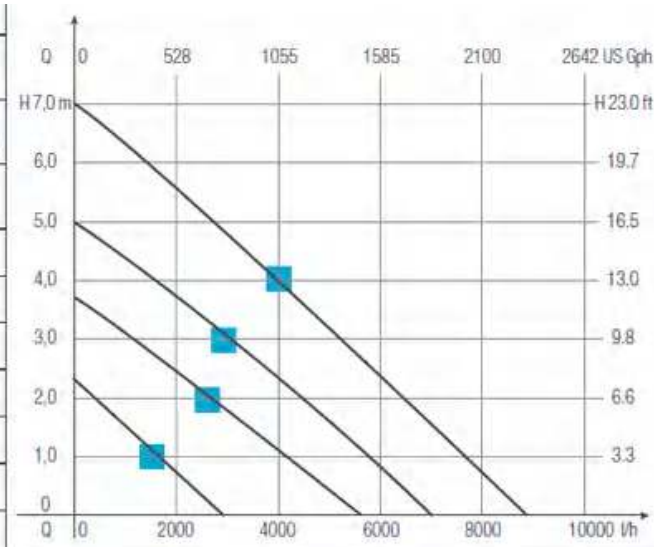
**Temperature sensor** will provide notifications when aquarium water temperature falls outside of the custom set range



**Blocked Rotor protection**  
**Dry running protection**  
**Loss of Wi-Fi signal**

## Technical Chart

24 V	6 - 35 W	10 - 40 W	20 - 65 W	30 - 95 W
H min - MAX H min - MAX	0,5 - 2,2 m 1,6 - 7,5 ft	1,0 - 3,5 m 3,5 - 11,5 ft	2,0 - 5,0 m 6,5 - 16,5 ft	2,6 - 7,0 m 8,5 - 23,0 ft
Q min - MAX Q min - MAX	1000 - 3000 l/h 260 - 800 US gph	2000 - 5500 l/h 530 - 1450 US gph	3000 - 7000 l/h 800 - 1900 US gph	4000 - 9000 l/h 1000 - 2500 US gph
	3.0	6.0	7.0	9.0
6,0 m				1500 l/h
5,0 m				2500 l/h
4,0 m			1300 l/h	4000 l/h
3,0 m		800 l/h	2500 l/h	5700 l/h
2,0 m	320 l/h	2200 l/h	4200 l/h	6900 l/h
1,0 m	1600 l/h	3800 l/h	5400 l/h	8000 l/h
0	3000 l/h	5500 l/h	7000 l/h	9000 l/h



# SYNCRA SDC

## Details



**PROTECTIVE GRID INCLUDED** (Mod. 6.0-7.0-9.0 up to 4,5 mm solids) Bottom or top water suction.

**PROTECTIVE GRID NOT INCLUDED** (Mod. 3.0 up to 3,5 mm solids).



**VERSATILITY:** can be run internally or externally; 360° rotatable prechamber.



**INTEGRATED PROTECTION DISK** for balanced rotation of the rotor assembly and protection of its most sensitive parts.



**HOSE FITTINGS INCLUDED** for both flexible and rigid pipes (Mod. 6.0-7.0-9.0).

**HOSE FITTINGS NOT INCLUDED** for flexible pipes (Mod. 3.0).

# X-STREAM SDC



The XStream SDC wave maker pump is the latest addition to the Cloud based family of interconnected Wi-Fi aquarium devices introduced by S CCE with SYNCRA SDC. Being Wi-Fi capable with a FREE download of ContrALL app, you can manage the pump using your smartphone and internet connection. It is also possible to access a wide variety of flow modes and even sync multiple pumps together.

## ALERTS IN REAL TIME



WATER TEMPERATURE SENSOR



DRY RUNNING PROTECTION



BLOCKED ROTOR



LOSS OF WI-FI SIGNAL

## SMART FEATURES



VARIABLE SPEED



TEMPERATURE



PROGRAMS



SYNCHRONIZED SETTING

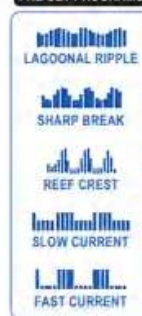


## NEW VOICE CONTROL

Works with:



PRE-SET PROGRAMS



## CONTRALL



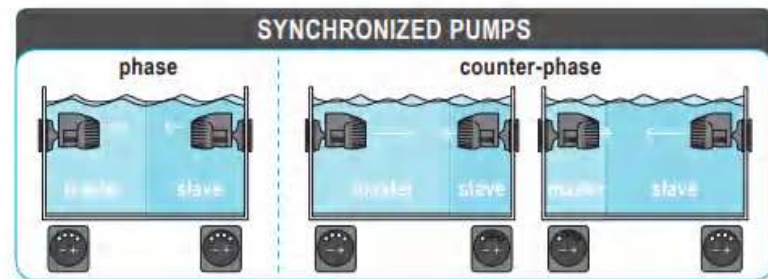
CUSTOM PROGRAMS



# X-STREAM SDC

## CONTRALL

Using ContrALL App  
MULTIPLE PUMPS can be controlled and managed either with separate or SYNCHRONIZED Programs from your smart phone or smart watch.



### USER FRIENDLY

Tailor-made for both beginners and more advanced reef keepers with dedicated research on PRE-SET PROGRAMS or CUSTOM PROGRAMS.





# CONTROL App

**Free Download**

**Quick SET UP**

**User Profile Setting** To optimize the use of the APP

**My Devices** The end user can add as many devices as he likes and identifies each one by an ID Colour and a Name

**My smart system** In case of more than 1 aquarium working with SDC pumps, it is possible to incorporate the SDC devices in a group and identify this group with a name: Ex. MARINE1 - MARINE 2. Each System will then incorporate all settings related to that aquarium

**Voice Assistant** The end user can interact with the SDC devices by setting Key commands and control them using SIRI, GOOGLE ASSISTANT, ALEXA

**Notifications** Notifications in real time will be sent by e.mail or alerts pop up in case of troubles



INDIVIDUAL

# CONTROL App

**My Devices** BY selecting one **SDC SYNCRA PUMP** it is possible

- To set up the power of the pump
- To choose one pre-set mode from 6 different flow patterns
- To select ECO running system: 7 hour cycle at a specific speed which will repeat automatically unless removing this setting time
- To select PAUSE : 10 minutes cycle at no speed or very low one to feed the fishes or make a quick check. Automatically re-start after 10 minutes
- To select PROGRAM for a totally free setting on cycle-pattern- speed- Advanced Fishkeepers

## **SINGLE device Identity**

- Give a name to identify at glance the pump
- Colour's choice setting available for visible identification
- Temperature setting by creating comfort zone outside of which ALERTS System will be automatically activated

# CONTROL App

**My Devices** BY selecting one **SDC xstream PUMP** it is possible

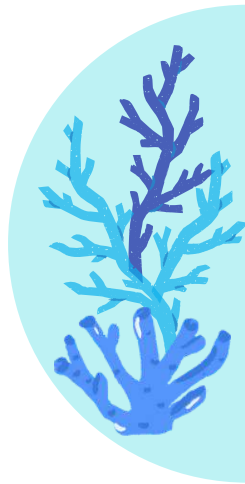
- To set up the power of the pump
- To choose one pre-set mode from 5 different flow patterns- SUGGESTED FOR BEGINNERS
- To select CUSTOM PROGRAMS with 5 different FREE setting flow patterns- SUGGESTED FOR ADVANCED FISHKEEPER SUGGESTED FOR BEGINNERS
- To program PAUSE or ECO by choosing SCHEDULE in Custom orgrams session

## SINGLE device Identity

- Give a name to identify at glance the pump
- Colour's choice setting available for visible identification
- Sync multiple pumps together
- Temperature setting by creating comfort zone outside of which ALERTS System will be automatically activated

INDIVIDUAL





# CONTROLL App

OPEN SOURCE TO:

- APEX NEPTUNE SYSTEM via Wi-Fi



- GHL with special cable

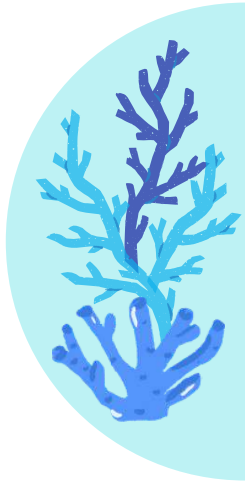


- AQUAVITRO SENTIA DOSING PUMPS



KEY PARTNERS

# MARINE



## IN STORE- Shelf Proposal

